



INDOFINE Chemical Company, Inc.

121 Stryker Lane, Bldg. 30
Hillsborough, NJ 08844 USA
Phone: (908) 359-6778; Fax: (908) 359-1179

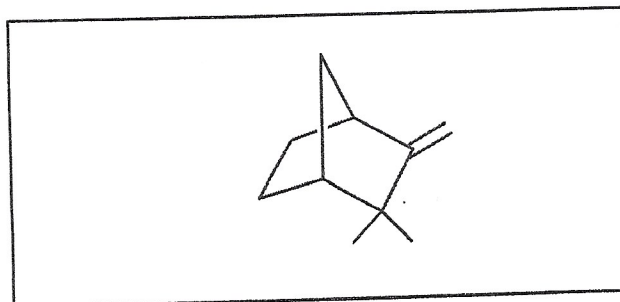
Certificate Of Analysis

025485S

CAMPHENE

Lot No.: 22021014

CAS RN	79-92-5
MOL FORMULA	C ₁₀ H ₁₆
MOL WEIGHT	136,24

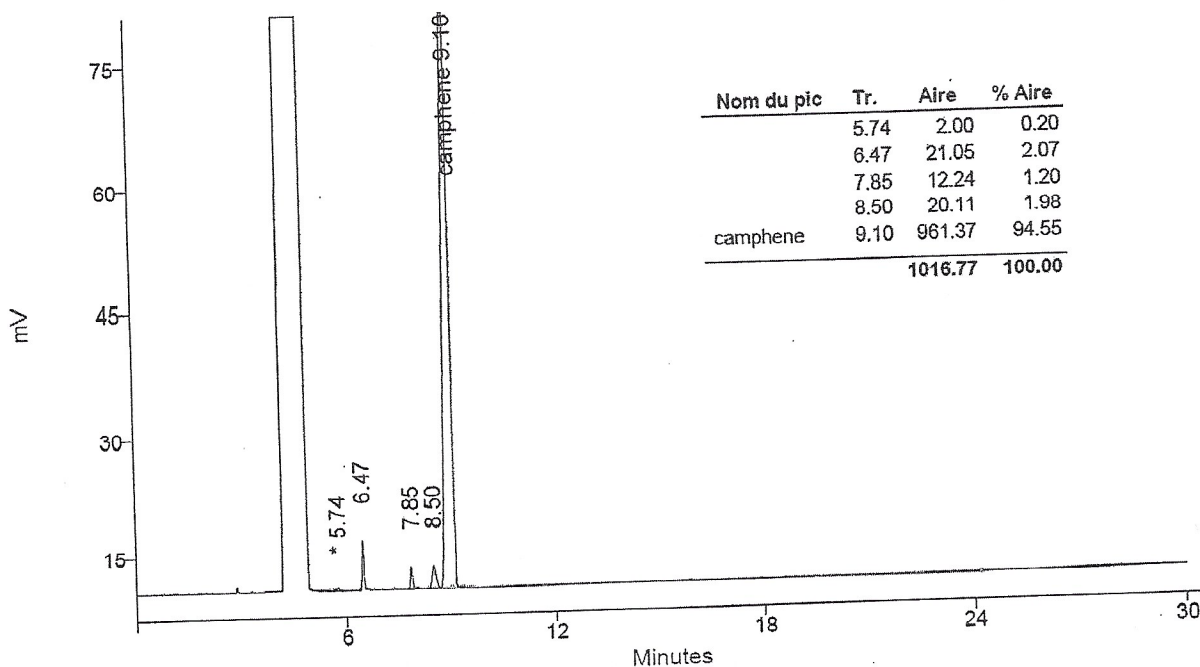


TEST	METHOD	UNIT	SPECIFICATION	RESULT
Appearance	Visual		Solid	Conform
Water content	KF	% w/w		< 0,2
Assay	GC	% area	≥ 98,0 (sum of enantiomers)	94,6

GC CHROMATOGRAM

Column : Solgel-wax capillary 30m x 0,25mm x 0,25µm
Temperature : Column 40 (10mn) to 220°C (10°C/min)
Injector 200°C, Detector 230°C
Detector : FID

Carrier gas : Helium 1ml/min
Split : 1/20
Injection volume : 0,5 µl
Injection solvent : isopropanol



LONG TERM STORAGE : Below 8°C in a dry and dark place

TRANSPORT CONDITIONS : Ambient temperature